

# MARINE

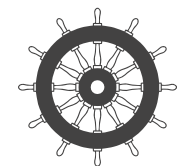
## INTERIOR EQUIPMENT

# INSPECTION HATCHES



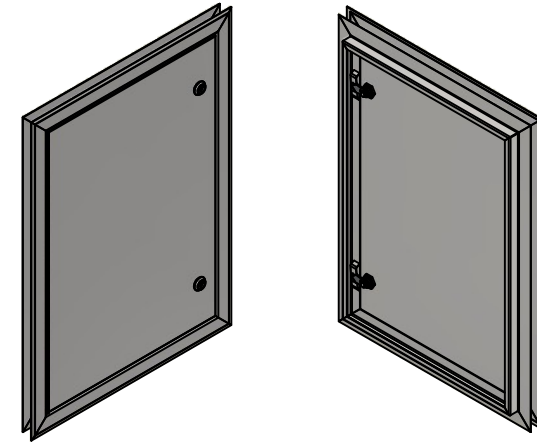
[www.famos-marine.com](http://www.famos-marine.com)  
Tel. +48 587 316 720  
commercial@famos-marine.com

OFFICE / PRODUCTION:  
Młyńska 1/3, 83-010 Straszyn, Poland  
info@famos-marine.com

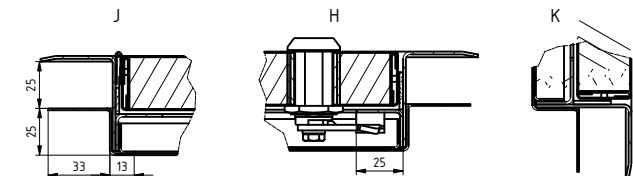
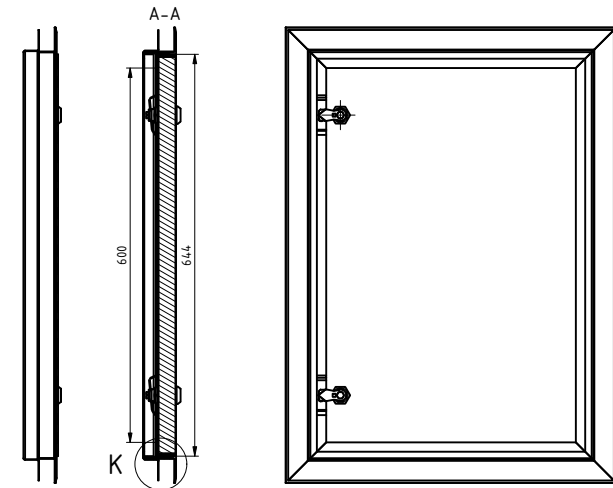
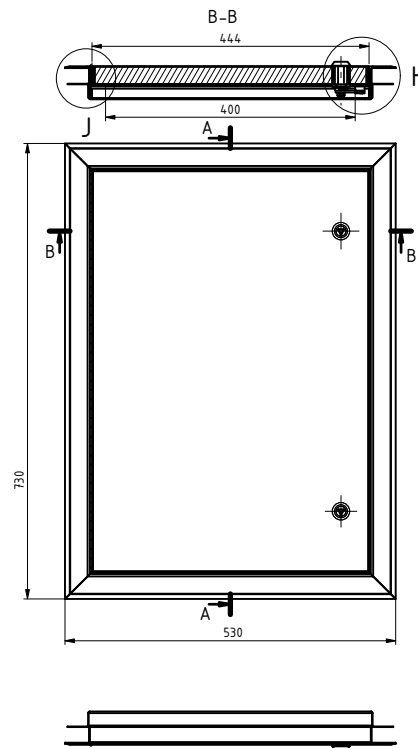




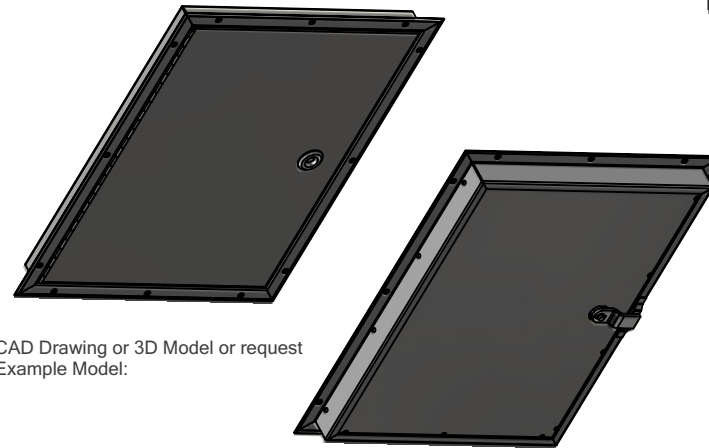
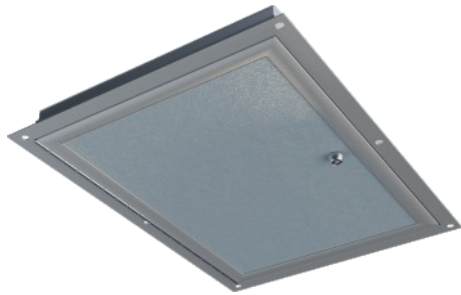
CAD Drawing or 3D Model or request  
Example Model:



MODEL		16-004N
DESCRIPTION		
Fire class	B15	
Hatch leaf surface	Powder-coated / PVC foil / Stainless steel	
Hatch frame surface	Powder-coated / Stainless steel	
For wall thickness	25 / 50 mm	
Weight	on request acc. to dimensions	
Core material	Mineral wool	
Clear opening	Width: up to 700mm Height: up to 1850mm	
Standard locks	Triangular and square locking Remor, Roztocze	
Application	Wall inspection hatch	
<b>OPTIONS</b>		
C-Profile around leaf of hatch	■	

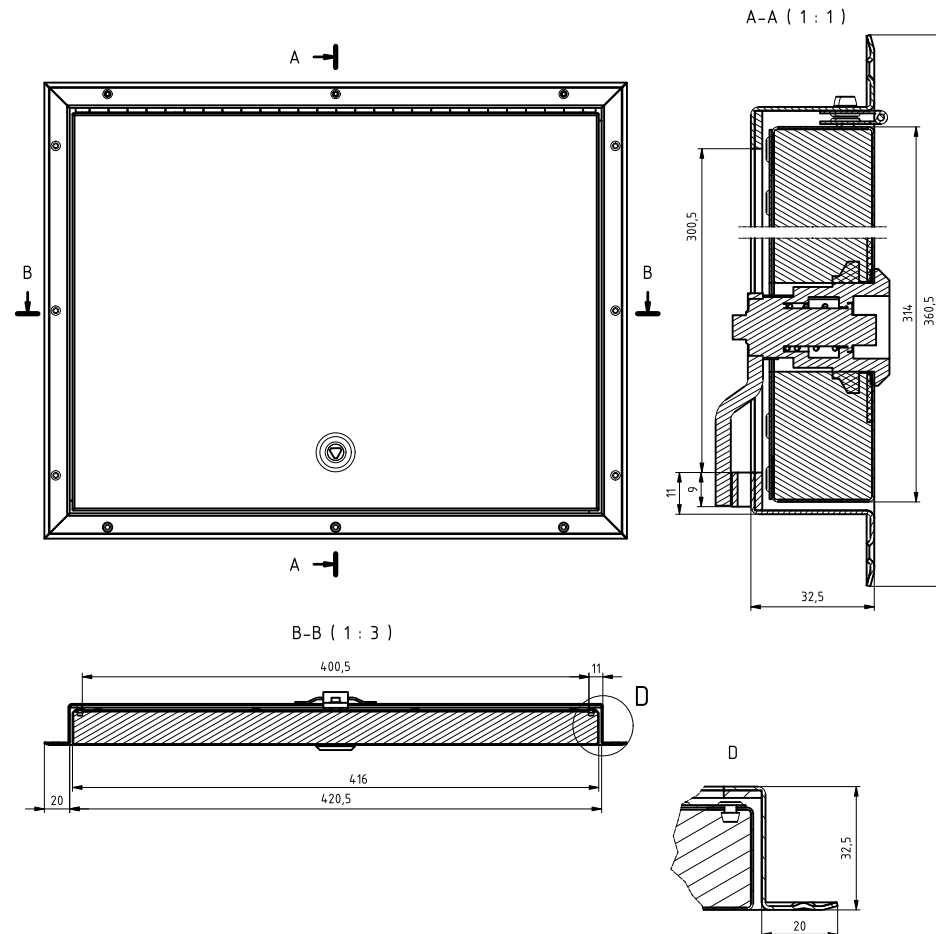


The above models are also available in fire class C, made of aluminium with mineral wool or honeycomb core  
B15-class fire hatch meets IMO and SOLAS requirements in accordance with the European MED Directive 2014/90/EU and USCG regulations



CAD Drawing or 3D Model or request Example Model:

MODEL		16-319
DESCRIPTION		
Fire class	B15	
Hatch leaf surface	Powder-coated / PVC foil / Stainless steel	
Hatch frame surface	Powder-coated / Stainless steel	
Hatch leaf thickness	30 mm	
Weight	on request acc. to dimensions	
Core material	Mineral wool	
Clear opening	Width: up to 400mm Height: up to 400mm	
Standard locks	Triangular and square locking Remor, Roztocze	
Application	Ceiling inspection hatch	
OPTIONS		
C-Profile around leaf of hatch	■	



The above models are also available in fire class C, made of aluminium with mineral wool or honeycomb core  
 B15-class fire hatch meets IMO and SOLAS requirements in accordance with the European MED Directive 2014/90/EU and USCG regulations