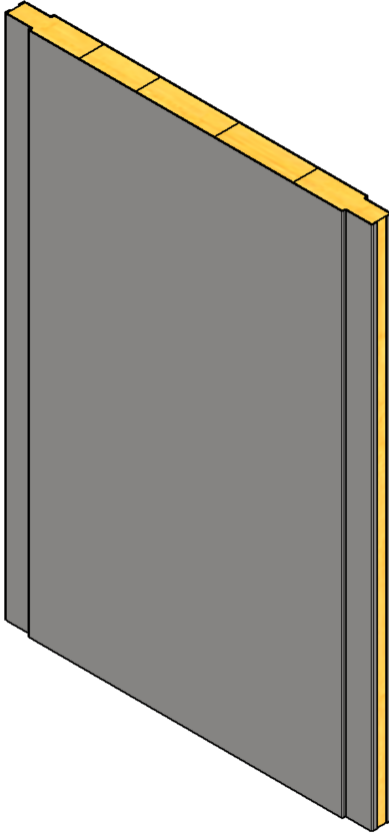


B15 RATED WALL SYSTEM

Double side tongue

TYPE B-13-061



GENERAL INFORMATIONS:

Fire class: B15

Standard panel width (B): 300, 450, 600 mm

Panel width (possible options) :

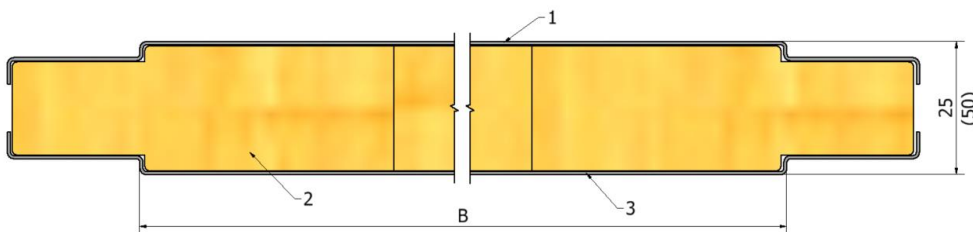
- 150-600 mm* (B15 certified)
- up to 1000 mm* (non- certified)

Standard panel height (H):

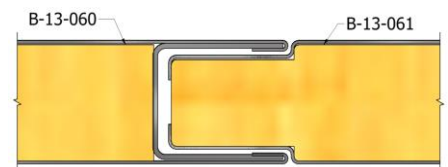
- up to 2600 mm* (B15 certified)
- up to 3000 mm* (non- certified)

Mass: 25mm – 14,2 kg/ m²
50 mm – 17,6 kg/m²

CROSS-SECTION:



JOINING METHOD:



PRODUCT CODE EXAMPLE:

B-13-061 – **B15** – **25** – **600x2000** – **Galv** – **9010** – **Galv**

| TYPE | FIRE RATE | THICKNESS | SIZE BxH | MATERIAL | 1. FINISH | 2. FINISH |
|----------|-----------|-----------|----------|----------|-----------|-----------|
| B-13-061 | B15 | 25 | 600x2000 | Galv | 9010 | Galv |

MATERIAL:

- Galvanized steel 0,6 mm
(Stainless steel 0,6 mm)
- Mineral wool density 175 kg/m³
- Galvanized steel 0,6 mm
(Stainless steel 0,6 mm)

FINISHING:

- RAL
- PVC Foil
- Galvanized steel
- Stainless steel

*For more information, contact us.